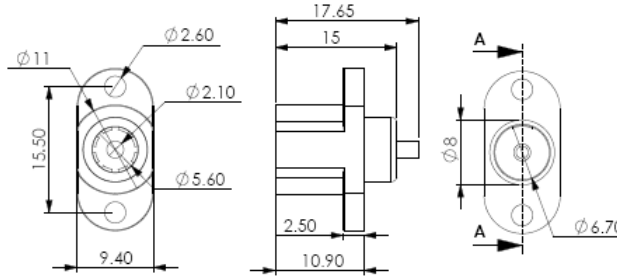


DC POWER CONNECTORS

CH-08033

2.1 X 5.5 DC SOCKET CHASSIS MOUNT

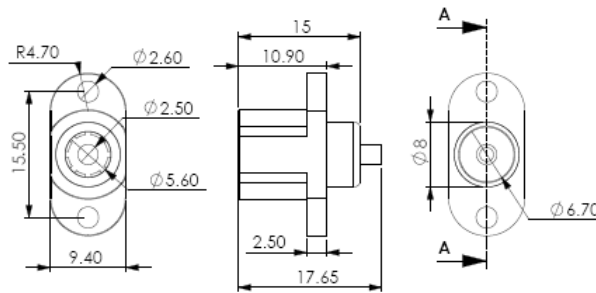


SPECIFICATION :

Contact Resistance :
 30m Ω max. (initial)
Insulation Resistance :
 100M Ω min. at 500V DC
Voltage Withstand :
 500V AC for 1 minute

CH-08034

2.5 X 5.5 DC SOCKET PANEL MOUNT

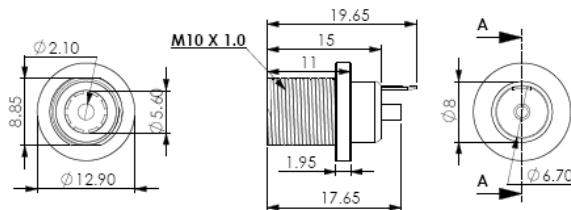


SPECIFICATION :

Contact Resistance :
 30m Ω max. (initial)
Insulation Resistance :
 100M Ω min. at 500V DC
Voltage Withstand :
 500V AC for 1 minute

CH-08053

2.1 X 5.5 DC SOCKET PANEL MOUNT

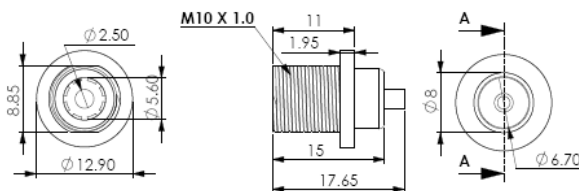


SPECIFICATION :

Contact Resistance :
 30m Ω max. (initial)
Insulation Resistance :
 100M Ω min. at 500V DC
Voltage Withstand :
 500V AC for 1 minute

CH-08054

2.5 X 5.5 DC SOCKET PANEL MOUNT



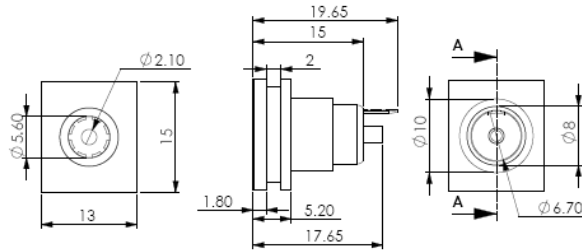
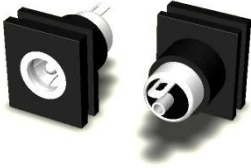
SPECIFICATION :

Contact Resistance :
 30m Ω max. (initial)
Insulation Resistance :
 100M Ω min. at 500V DC
Voltage Withstand :
 500V AC for 1 minute

DC POWER CONNECTORS

CH-08063

2.1 X 5.5 DC SOCKET PANEL MOUNT

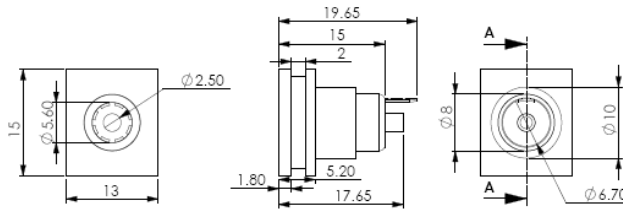
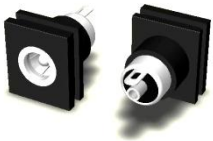


SPECIFICATION :

Contact Resistance :
30mΩ max. (initial)
Insulation Resistance :
100MΩ min. at 500V DC
Voltage Withstand :
500V AC for 1 minute

CH-08064

2.5 X 5.5 DC SOCKET PANEL MOUNT



SPECIFICATION :

Contact Resistance :
30mΩ max. (initial)
Insulation Resistance :
100MΩ min. at 500V DC
Voltage Withstand :
500V AC for 1 minute